



## 2 bed apartment to buy in NE1

St. James Gate, Newcastle Upon Tyne,  
Newcastle upon Tyne, Tyne and Wear,  
NE1 4BB

# £210,000

🛏 x2 🚿 x1 🚻 x1

Tenure

**Leasehold**

Allocated parking

## Property features

✓ EPC Rating B

## Key Information

- ✓ Council Tax: Band C
- ✓ EPC Rating: B
- ✓ Heating supply: Electric

## Description

Stunning Two-Bedroom Apartment with Panoramic Views & Secure Parking

Experience modern city living in this stylish two-bedroom apartment, situated on the 9th floor with breathtaking views over Newcastle's skyline.

The bright and spacious open-plan living area features prominent windows, allowing natural light to flood the space while showcasing stunning cityscapes. The sleek, fully-fitted kitchen is access from the lounge, perfect for both everyday living and entertaining. Both bedrooms are generously sized with ample storage, and the contemporary bathroom is finished to a high standard.

Residents enjoy fantastic amenities, including secure parking, lift access, and a well-maintained communal entrance. Located in the heart of Newcastle, this apartment offers easy access to shops, restaurants, bars, and excellent transport links.

Don't miss out—schedule a viewing today!

Council Tax Band: C

Tenure: Leasehold

Price: £210,000

Property Type: Apartment

Parking: Allocated

Heating: Electric

## Entrance Hallway

Storage cupboard x2.

---

## Lounge Diner

5.20m x 3.40m (17'0" x 11'1")

Access to balcony, windows to front.



## Kitchen

4.40m x 2.40m (14'5" x 7'10")

Fitted floor and wall units with roll top surface, sink and drainer, gas hob, electric oven, plumbed for washing.



## Bedroom One

3.10m x 2.90m (10'2" x 9'6")

Window to front.



## En-Suite

Suite: shower cubicle, low level wc, wash hand basin.



## Bedroom Two

3.50m x 2.60m (11'5" x 8'6")

Window to side.

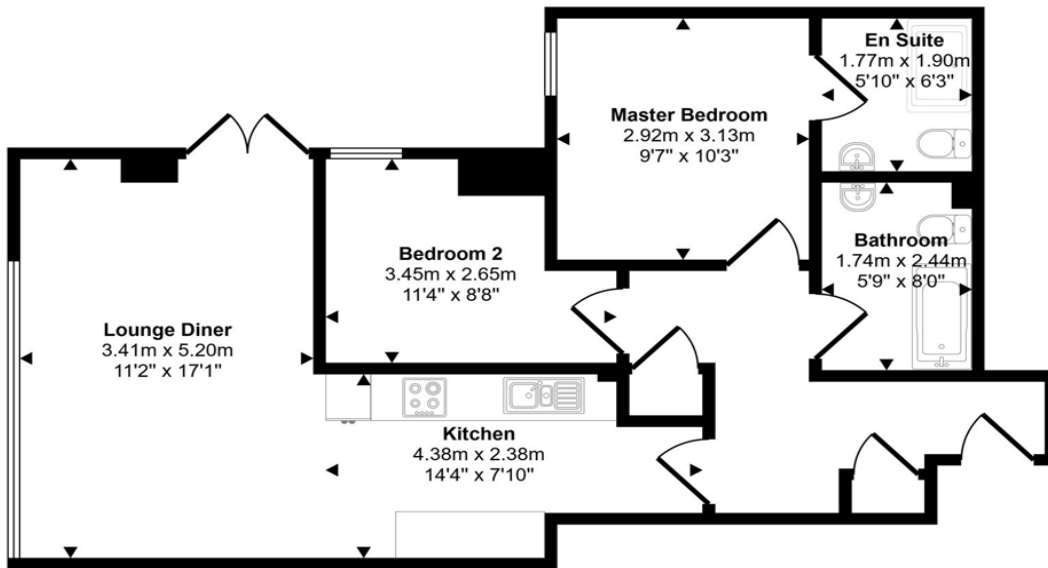


## Bathroom

Suite comprising: Panelled bath, low level, pedestal wash basin.



Approx Gross Internal Area  
64 sq m / 686 sq ft



Floorplan

This floorplan is only for illustrative purposes and is not to scale. Measurements of rooms, doors, windows, and any items are approximate and no responsibility is taken for any error, omission or mis-statement. Icons of items such as bathroom suites are representations only and may not look like the real items. Made with Made Snappy 360.

Energy Efficiency Rating		
	Current	Potential
<i>Very energy efficient - lower running costs</i>		
(92-100) <b>A</b>		
(81-91) <b>B</b>	82	84
(69-80) <b>C</b>		
(55-68) <b>D</b>		
(39-54) <b>E</b>		
(21-38) <b>F</b>		
(1-20) <b>G</b>		
<i>Not energy efficient - higher running costs</i>		
<b>England, Scotland &amp; Wales</b>	EU Directive 2002/91/EC	

St. James Gate, Newcastle Upon Tyne, Newcastle upon Tyne, Tyne and Wear, NE1  
4BB

Contact your local branch today for more information on this property:

**107 London Road, Headington, Oxford, Oxfordshire, OX3 9HZ, [www.chancellors.co.uk](http://www.chancellors.co.uk)**

These particulars, whilst believed to be accurate are set out as a general outline only for guidance and do not constitute any part of an offer or contract. Intending purchasers should not rely on them as statements of representation of fact, but must satisfy themselves by inspection or otherwise as to their accuracy. No person in this firm's employment has the authority to make or give any representation or warranty in respect of the property.

