



## 4 bed town house to buy in SR7

Grenaby Way, Murton, Seaham, Durham,  
SR7 9GW

# £199,950

🛏 x 4 🍳 x 2 🚗 x 2

Tenure

Size

**Freehold**

**1238 sq ft / 115 sq m**

## Property features

- ✓ No Onward Chain
- ✓ Desirable End Plot Position
- ✓ Four Bedrooms
- ✓ 1237sqft total area
- ✓ EPC Rating C

Driveway & Garage parking

Garden

## Key Information

- ✓ Council Tax: Band D
- ✓ EPC Rating: C
- ✓ Heating supply: Gas
- ✓ Electric supply: National Grid
- ✓ Water supply: Direct mains water

## Description

No Chain | End Plot | 1237sqft Total Floor Area | Four-Bedroom Semi-Detached Townhouse – Murton Village

Offered with no onward chain, this beautifully presented four-bedroom semi-detached townhouse occupies a desirable end plot position within a popular modern development in Murton, close to Seaham. Extending to approximately 1237sqft area, the property provides spacious, versatile accommodation set across three well-designed floors, ideal for families, professionals, or investors.

The ground floor opens with a welcoming entrance hallway leading to a generous dining room, perfect for family meals or entertaining. To the rear, a well-appointed kitchen/diner forms the heart of the home, complemented by a separate utility room and a convenient downstairs WC for added practicality.

On the first floor, a bright and airy living room offers an excellent space for relaxing, alongside a well-proportioned second bedroom and a modern family bathroom.

The second floor hosts the impressive master bedroom, complete with fitted wardrobes and a Jack & Jill en-suite shower room, also serving Bedroom Three. A fourth bedroom completes the upper level, offering flexible accommodation for guests, home working, or growing families.

Externally, the property benefits from an open-plan lawned garden to the front, while the end-plot position enhances the fully enclosed rear garden — ideal for outdoor entertaining and family enjoyment. A detached garage and driveway to the rear provide convenient off-street parking.

Ideally located close to local amenities, schools, Dalton Park, and the A19 for commuting, this spacious home represents excellent value within a thriving and well-connected community.

Early viewing is highly recommended.

To arrange a viewing or for further information, please contact the Peterlee office.

Council Tax Band: D

Tenure: Freehold

Price: Offers In Excess Of £199,950

Property Type: Town House

Build Size: 115 sq m

USPs: Garden, Chain free

Parking: Driveway & Garage

Heating: Gas

Electric: National Grid

Water: Direct mains water

Sewerage: Standard UK domestic

## External Front



## Entrance Hallway



## Dining Room



## Kitchen



## Utility Room

## Downstairs W/c



## First Floor Landing



## Lounge



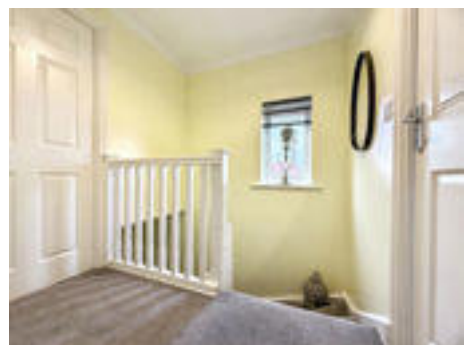
## Bedroom Two



## Family Bathroom



## Second Floor Landing



## Bedroom One



## Jack and Jill En-suite



## Bedroom Three



## Bedroom Four

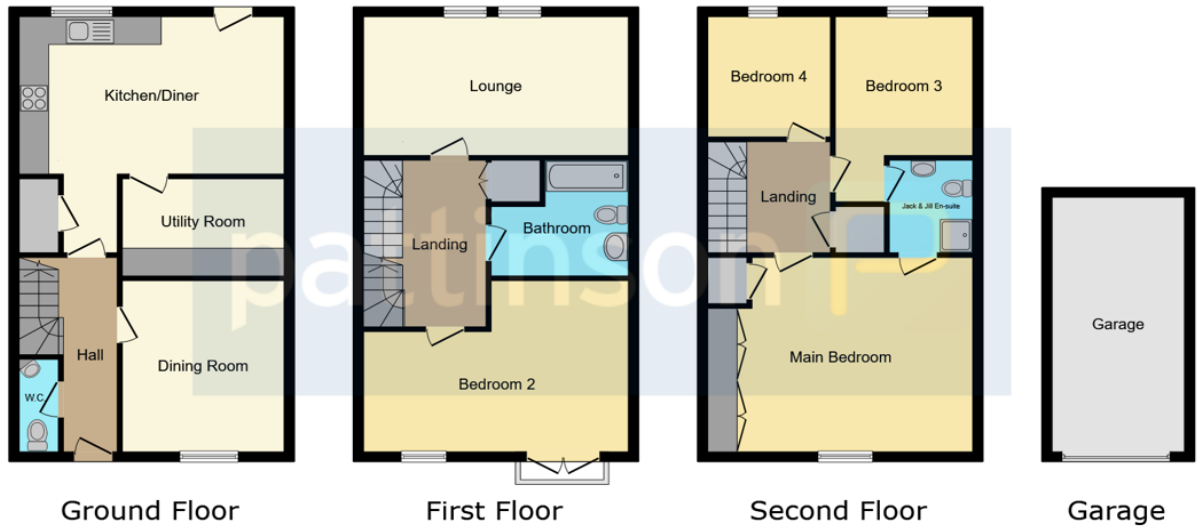


## External Rear



## Garage & Drive





This floor plan is for illustrative purposes only. It is not drawn to scale. Any measurements, floor areas (including any total floor area), openings and orientations are approximate. No details are guaranteed, they cannot be relied upon for any purpose and do not form any part of any agreement. No liability is taken for any error, omission or misstatement. A party must rely upon its own inspection(s). Powered by www.Propertybox.io



Energy Efficiency Rating		Current	Potential
<i>Very energy efficient - lower running costs</i>			
(92-100) <b>A</b>			
(81-91) <b>B</b>			85
(69-80) <b>C</b>		72	
(55-68) <b>D</b>			
(39-54) <b>E</b>			
(21-38) <b>F</b>			
(1-20) <b>G</b>			
<i>Not energy efficient - higher running costs</i>			
<b>England, Scotland &amp; Wales</b>		EU Directive 2002/91/EC	

Grenaby Way, Murton, Seaham, Durham, SR7 9GW

Contact your local branch today for more information on this property:

**107 London Road, Headington, Oxford, Oxfordshire, OX3 9HZ, [www.chancellors.co.uk](http://www.chancellors.co.uk)**

These particulars, whilst believed to be accurate are set out as a general outline only for guidance and do not constitute any part of an offer or contract. Intending purchasers should not rely on them as statements of representation of fact, but must satisfy themselves by inspection or otherwise as to their accuracy. No person in this firm's employment has the authority to make or give any representation or warranty in respect of the property.

