



3 bed terraced house to buy in

Avebury Place, Cramlington, Cramlington,
Northumberland, NE23 2UP

£120,000

🏠 x3 🚿 x1 🚿 x1

Tenure

Freehold

Property features

- ✓ No onward purchase
- ✓ Fantastic family home
- ✓ Modern shower room
- ✓ Perfect for first time buyers
- ✓ EPC Rating C

On Street parking

Key Information

- ✓ Council Tax: Band A
- ✓ EPC Rating: C
- ✓ Heating supply: Gas

Description

Super opportunity to purchase a spacious and well proportioned home with no onward chain. Ideal for first time buyers and families, this home offers some fantastic features and provides generous and practical accommodation. There is also an attractive rear garden offering a private outlook. The accommodation comprises entrance porch, open plan living/dining area with staircase to the first floor. There is a rear hallway with access to the kitchen, walk in storage cupboard, ground floor w/c and door to the garden. The first floor provides three well proportioned bedrooms and a modern shower room.

Externally there are gardens to the front and rear, both are enclosed with gated access.

A really lovely home which will be very appealing to families looking for a spacious home which is ready to move into!

Council Tax Band: A

Tenure: Freehold

Price: £120,000

Property Type: Terraced House

Parking: On Street

Heating: Gas

Porch

Living Room

Additional image

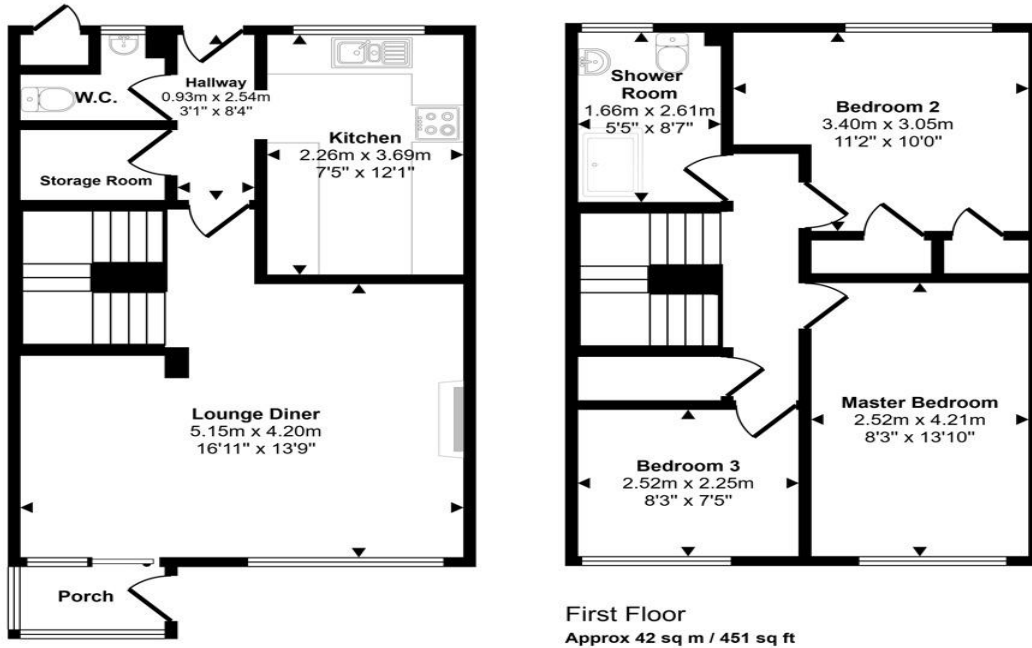
Rear hallway

W/C Cloaks

Kitchen

Storage cupboard

Approx Gross Internal Area
86 sq m / 928 sq ft



This floorplan is only for illustrative purposes and is not to scale. Measurements of rooms, doors, windows, and any items are approximate and no responsibility is taken for any error, omission or mis-statement. Icons of items such as bathroom suites are representations only and may not look like the real items. Made with Made Snappy 360.

Energy Efficiency Rating		
	Current	Potential
<i>Very energy efficient - lower running costs</i>		
(92-100) A		
(81-91) B		84
(69-80) C	74	
(55-68) D		
(39-54) E		
(21-38) F		
(1-20) G		
<i>Not energy efficient - higher running costs</i>		
England, Scotland & Wales	EU Directive 2002/91/EC	

Avebury Place, Cramlington, Cramlington, Northumberland, NE23 2UP

Contact your local branch today for more information on this property:

107 London Road, Headington, Oxford, Oxfordshire, OX3 9HZ, www.chancellors.co.uk

These particulars, whilst believed to be accurate are set out as a general outline only for guidance and do not constitute any part of an offer or contract. Intending purchasers should not rely on them as statements of representation of fact, but must satisfy themselves by inspection or otherwise as to their accuracy. No person in this firm's employment has the authority to make or give any representation or warranty in respect of the property.

