



4 bed detached house to buy in

Mile Road, Widdrington, Morpeth,
Northumberland, NE61 5QP

£395,000

🏠 x4 🚗 x3 🚲 x2

Tenure

Freehold

Driveway parking

Property features

- ✓ Four Bedroom Detached House
- ✓ Wrap-around Gardens
- ✓ Driveway with space for 4 cars
- ✓ En-Suite to Main Bedroom
- ✓ EPC Rating D

Key Information

- ✓ Council Tax: Band D
- ✓ EPC Rating: D
- ✓ Heating supply: Gas
- ✓ Electric supply: National Grid
- ✓ Water supply: Direct mains water
- ✓ Broadband: FTTC (fibre to the cabinet)
- ✓ Mobile signal: Intermittent

Description

FOUR BEDROOM DETACHED HOUSE

WRAP AROUND PRIVATE GARDENS

CONSERVATORY

Pattinson welcome to the market this beautifully presented four bedroom, detached house, located on Mile Road in Widdrington.

To the ground floor the property comprises an entrance porch, entrance hallway, L-Shaped lounge with superb multi-fuel stove, dining room, WC, Kitchen, Bedroom 4 and a conservatory. To the first floor, you have a spacious landing with doors to bedrooms 1, 2 and 3 and the family bathroom, with bedroom 1 benefitting from an en-suite. Externally, you have wrap around mature gardens, with a driveway with space for approximately 4 cars and a lawned garden to the front, and a low maintenance rear garden, mostly laid to gravel.

Widdrington is a well connected village located on the Northumberland Coastline. Benefitting from a mainline train station, and multiple buses affording convenient travel to Morpeth, Newcastle and beyond to the South, and Alnwick, Berwick and Scotland to the North. There is a Co-op supermarket less than a mile from the property, GP surgery, Primary School, chip shop and hairdressers, and Druridge Bay Country Park is approximately 3 miles from the property. Morpeth is approximately 8 miles from the property, which affords access to a greater number of shops, restaurants and bars.

Please contact our team in Morpeth to arrange a viewing.

Council Tax Band: D

Tenure: Freehold

Price: £395,000

Property Type: Detached House

Parking: Driveway

Construction materials: Brick and block

Roofing type: Slate tiles

Heating: Gas, Solid Fuel, Wood Burner

Electric: National Grid

Water: Direct mains water

Water meter: No

Sewerage: Standard UK domestic

Air conditioning: No

Broadband: FTTC (fibre to the cabinet)

Mobile signal coverage: Intermittent

Porch

1.48m x 1.70m (4'10" x 5'6")

Dual aspect uPVC double glazed windows, and uPVC double glazed front door, tiled floor.



Living Room

5.94m x 5.74m (19'5" x 18'9")

L-Shaped with dual aspect uPVC double glazed windows. Multi-fuel fire, along with central heating radiators.



Dining Room

3.47m x 3.62m (11'4" x 11'10")

uPVC double glazed window, central heating radiator, electric fire in fireplace.



Kitchen

5.18m x 3.32m (16'11" x 10'10")

Range of wall and floor units, breakfast bar, dual aspect uPVC double glazed windows, central heating radiator, tiled floor.



Downstairs WC

0.79m x 2.17m (2'7" x 7'1")

Fully tiled, PVC double glazed window, low lying toilet and pedestal sink.



Conservatory

5.26m x 2.63m (17'3" x 8'7")

uPVC double glazed windows, French doors and roof, tiled floor.



Master Bedroom

3.07m x 5.06m (10'0" x 16'7")

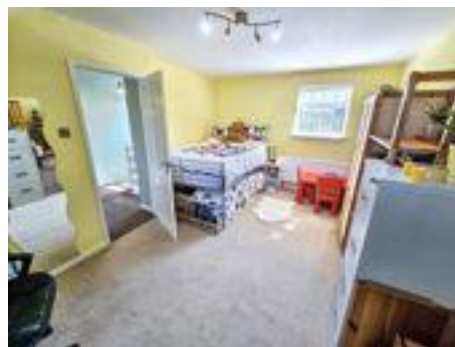
Dual aspect uPVC double glazed windows, central heating radiator, door to en-suite.



Bedroom 2

3.44m x 5.06m (11'3" x 16'7")

Dual aspect uPVC double glazed windows, central heating radiator.



Bedroom 3

3.34m x 4.90m (10'11" x 16'0")

uPVC double glazed window, central heating radiator.



Bedroom 4/ Reception Room

2.59m x 3.54m (8'5" x 11'7")

Located on the ground floor, uPVC double glazed window, central heating radiator.



En-suite Shower Room

0.86m x 2.10m (2'9" x 6'10")

uPVC double glazed window, fully tiled, low lying toilet, pedestal sink and walk-in shower cubicle.



Bathroom

1.70m x 2.10m (5'6" x 6'10")

uPVC double glazed window, central heating radiator, bath tub, pedestal sink and low lying toilet.

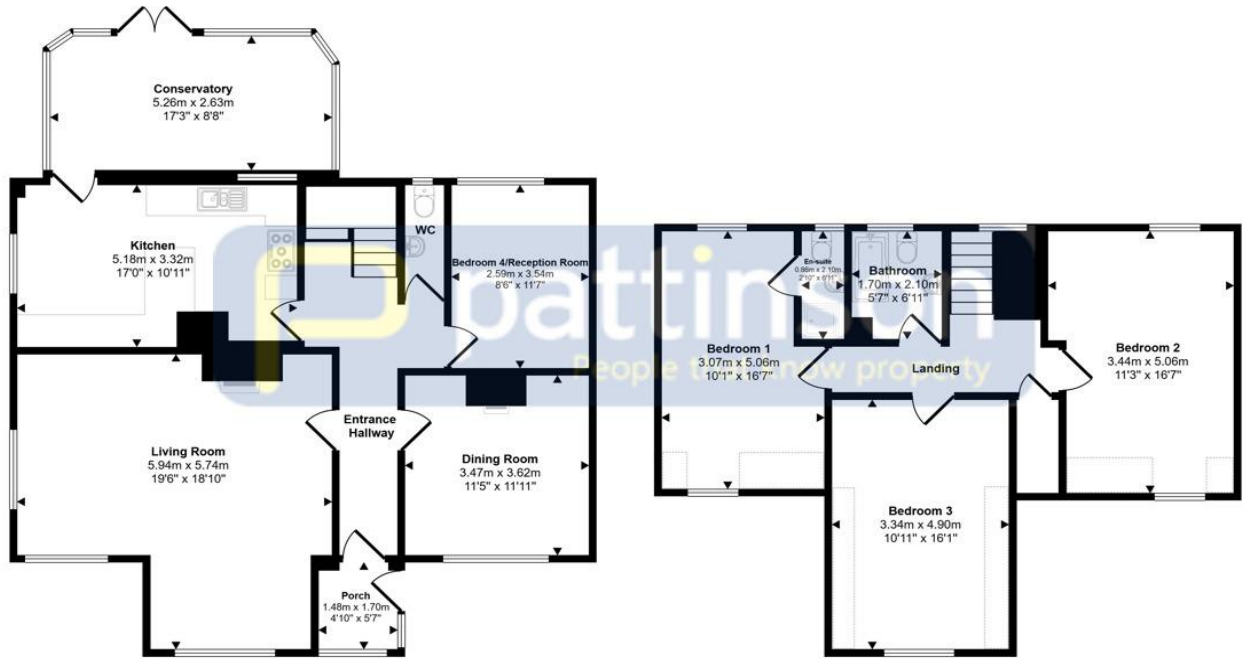


External

Wrap-around gardens. To the front, there is a gravelled driveway with space for approximately 4 cars, secured with a 7 bar metal gate, along with a lawned garden area, bordered with mature shrubs, creating a private space. To the rear, there is a gravelled rear garden, currently housing a shed and greenhouse.



Approx Gross Internal Area
168 sq m / 1811 sq ft



Ground Floor
Approx 103 sq m / 1111 sq ft

First Floor
Approx 65 sq m / 700 sq ft

Denotes head height below 1.5m

This floorplan is only for illustrative purposes and is not to scale. Measurements of rooms, doors, windows, and any items are approximate and no responsibility is taken for any error, omission or mis-statement. Icons of items such as bathroom suites are representations only and may not look like the real items. Made with Made Snappy 360.

Energy Efficiency Rating		Current	Potential
<i>Very energy efficient - lower running costs</i>			
(92-100) A			98
(81-91) B			
(69-80) C			
(55-68) D		68	
(39-54) E			
(21-38) F			
(1-20) G			
<i>Not energy efficient - higher running costs</i>			
England, Scotland & Wales		EU Directive 2002/91/EC	

Mile Road, Widdrington, Morpeth, Northumberland, NE61 5QP

Contact your local branch today for more information on this property:

107 London Road, Headington, Oxford, Oxfordshire, OX3 9HZ, www.chancellors.co.uk

These particulars, whilst believed to be accurate are set out as a general outline only for guidance and do not constitute any part of an offer or contract. Intending purchasers should not rely on them as statements of representation of fact, but must satisfy themselves by inspection or otherwise as to their accuracy. No person in this firm's employment has the authority to make or give any representation or warranty in respect of the property.

