



## 3 bed link detached house to buy in NE37

Brackley, Washington, Tyne and Wear,  
NE37 3DP

**£200,000** Offers Over

🏠 x3 🚗 x1 🚰 x1

Tenure

**Freehold**

Driveway parking

## Property features

- ✓ Three Bedrooms
- ✓ Large Out Building
- ✓ Link Detached
- ✓ Driveway
- ✓ EPC Rating B

## Key Information

- ✓ Council Tax: Band D
- ✓ EPC Rating: B
- ✓ Heating supply: Gas

## Description

Situated on the highly regarded Brackley in Washington, this impressive three bedroom link-detached home offers generous living space, versatile accommodation— making it ideal for growing families or those seeking multi-generational living.

Upon entering the property, you are welcomed into a spacious entrance area leading through to a large and inviting living room, perfect for relaxing and entertaining. The separate dining room provides an excellent space for family meals and social gatherings, while the well-appointed kitchen offers ample storage and workspace. A convenient downstairs WC completes the ground floor layout.

To the first floor, the property boasts three well-proportioned bedrooms. The standout master bedroom benefits from a walk-in wardrobe, offering excellent storage and a touch of luxury. The remaining bedrooms are generously sized and are served by a modern family bathroom.

Externally, the home truly excels. The substantial rear garden provides plenty of outdoor space for families and entertaining, and also features a fantastic detached out building.

To the front, a large driveway provides ample off-street parking for multiple vehicles.

This is a rare opportunity to acquire a spacious and versatile home in a popular residential location, early viewing is highly recommended.

Council Tax Band: D

Tenure: Freehold

Price: Offers Over £200,000

Property Type: Link detached house

Parking: Driveway

Heating: Gas

## External Front



## Living Room

8.92m x 4.016m (29'3" x 13'2")



## Dining Room

5.072m x 3.673m (16'7" x 12'0")



## Kitchen

5.669m x 1.68m (18'7" x 5'6")



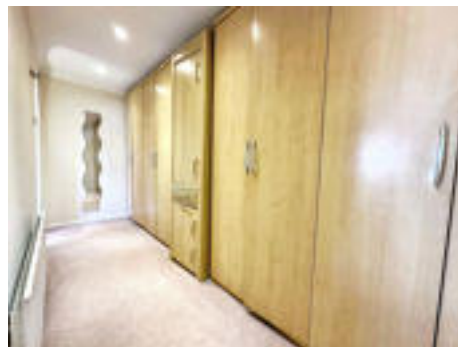
## Bedroom 1

4.847m x 4.342m (15'10" x 14'2")



## Master Dressing Room

4.353m x 1.684m (14'3" x 5'6")



## Bedroom 2

3.978m x 3.067m (13'0" x 10'0")



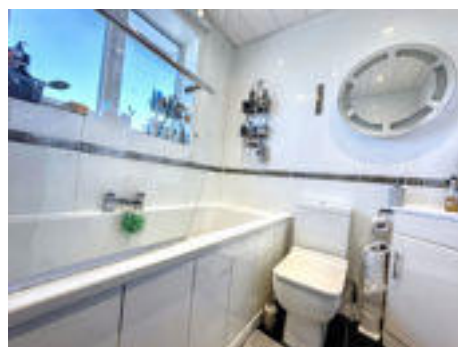
## Bedroom 3

2.909m x 2.025m (9'6" x 6'7")



## Bathroom

1.852m x 1.868m (6'0" x 6'1")



## Garden



## Annex Kitchen



## Annex Living Area

5.418m x 4.051m (17'9" x 13'3")




## Annex bathroom

2.255m x 1.518m (7'4" x 4'11")





Energy Efficiency Rating		
	Current	Potential
<i>Very energy efficient - lower running costs</i>		
(92-100) <b>A</b>		92
(81-91) <b>B</b>	90	
(69-80) <b>C</b>		
(55-68) <b>D</b>		
(39-54) <b>E</b>		
(21-38) <b>F</b>		
(1-20) <b>G</b>		
<i>Not energy efficient - higher running costs</i>		
<b>England, Scotland &amp; Wales</b>		EU Directive 2002/91/EC 

Brackley, Washington, Tyne and Wear, NE37 3DP

Contact your local branch today for more information on this property:

**107 London Road, Headington, Oxford, Oxfordshire, OX3 9HZ, [www.chancellors.co.uk](http://www.chancellors.co.uk)**

These particulars, whilst believed to be accurate are set out as a general outline only for guidance and do not constitute any part of an offer or contract. Intending purchasers should not rely on them as statements of representation of fact, but must satisfy themselves by inspection or otherwise as to their accuracy. No person in this firm's employment has the authority to make or give any representation or warranty in respect of the property.

