



## 3 bed semi-detached house to buy in NE29

Waterville Road, North Shields, North Shields, Tyne and Wear, NE29 6AY

# £160,000

🏠 x3 🚗 x1 🚰 x1

Tenure

**Leasehold**

## Property features

✓ EPC Rating C

Driveway parking

Garden

## Key Information

- ✓ Council Tax: Band A
- ✓ EPC Rating: C
- ✓ Heating supply: Gas

## Description

Three-Bedroom Semi-Detached Home with Gardens & Parking

Situated in a convenient and well-connected location, this attractive three-bedroom semi-detached property on Waterville Road offers an ideal home for families, first-time buyers, or investors alike.

The property boasts a bright and welcoming layout, featuring three well-proportioned bedrooms, providing comfortable living space throughout. Externally, the home benefits from both front and rear gardens, perfect for outdoor relaxation, entertaining, or family activities.

The property benefits from off-street parking and is ideally positioned with excellent transport links nearby, making commuting and access to local amenities simple and efficient. It is also located in close proximity to the popular Fish Quay, offering a vibrant selection of restaurants, bars, and coastal attractions.

Council Tax Band: A

Tenure: Leasehold

Length of Lease: 971

Price: £160,000

Property Type: Semi-detached house

USPs: Garden

Parking: Driveway

Heating: Gas

## Lounge

3.90m x 3.50m (12'9" x 11'5")

A well-proportioned living space featuring a double-glazed window to the front aspect, a television point, and a central heating radiator. A door provides access through to the kitchen/diner.



## Kitchen

Fitted with a range of wall and base units with complementary work surfaces, incorporating an oven and hob with and sink unit, with patio doors leading out to the rear garden. There is ample space for a dining.



## Main bedroom

Spacious master bedroom with double glazed window to the front.

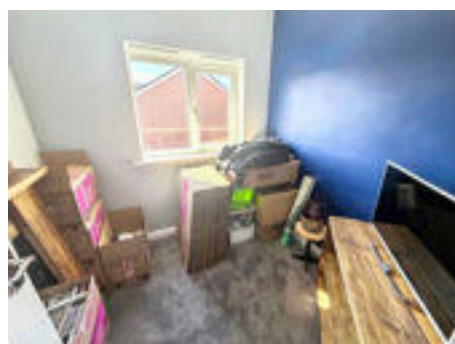


## Bedroom Two

Second bedroom with double glazed window to the rear



## Bedroom Three



## Bathroom

Modern shower room with low level W.C, vanity hand basin and shower cubical.




---

## Garden





Energy Efficiency Rating		
	Current	Potential
<i>Very energy efficient - lower running costs</i>		
(92-100) <b>A</b>		
(81-91) <b>B</b>		91
(69-80) <b>C</b>	77	
(55-68) <b>D</b>		
(39-54) <b>E</b>		
(21-38) <b>F</b>		
(1-20) <b>G</b>		
<i>Not energy efficient - higher running costs</i>		
<b>England, Scotland &amp; Wales</b>		EU Directive 2002/91/EC 

Waterville Road, North Shields, North Shields, Tyne and Wear, NE29 6AY

Contact your local branch today for more information on this property:

**107 London Road, Headington, Oxford, Oxfordshire, OX3 9HZ, [www.chancellors.co.uk](http://www.chancellors.co.uk)**

These particulars, whilst believed to be accurate are set out as a general outline only for guidance and do not constitute any part of an offer or contract. Intending purchasers should not rely on them as statements of representation of fact, but must satisfy themselves by inspection or otherwise as to their accuracy. No person in this firm's employment has the authority to make or give any representation or warranty in respect of the property.

