



To buy

## 4 bed detached house to buy in

Hutton Close, Fishburn, Stockton-on-Tees,  
Durham, TS21 4HE

# £240,000

🛏 x 4 🚿 x 2 🚿 x 2

Tenure

**Freehold**

Driveway parking

## Property features

- ✓ Popular Fishburn Location
- ✓ Driveway For Multiple Vehicle
- ✓ Rear Garden with Patio Area
- ✓ Within Reach to Local Schools, Shops, Amenities and Transport
- ✓ EPC Rating C

## Key Information

- ✓ Council Tax: Band C
- ✓ EPC Rating: C
- ✓ Heating supply: Gas

## Description

\*\*\*\*\*4 Bedroom Detached Property\*\*\*\*\*

Located on the ever-popular Hutton Close in the heart of Fishburn, this beautifully presented four-bedroom detached property offers spacious, modern living ideal for families and professionals alike.

Upon entering the property, you are welcomed into a bright and inviting porch leading through to a generous open-plan lounge and dining area. This versatile space is perfect for both everyday living and entertaining, enjoying an abundance of natural light and a seamless flow throughout. The well-appointed kitchen offers ample storage and workspace, making it ideal for keen cooks, while a convenient downstairs WC completes the ground floor accommodation.

To the first floor, the property boasts 3 well-proportioned bedrooms, providing flexible living arrangements for family life, home working or guests. The accommodation is complemented by a modern family bathroom fitted with a contemporary suite.

Externally, the property continues to impress. To the front, a private driveway provides off-street parking for multiple vehicles. To the rear, there is a generous enclosed garden featuring a patio area, perfect for outdoor dining, entertaining or relaxing during warmer months. The garage has been converted to a bedroom with En-Suite shower.

Situated within a quiet residential location, yet offering access to local amenities, schools and transport links, this fantastic home must be viewed to fully appreciate the space, style and quality on offer.

Council Tax Band: C

Tenure: Freehold

Price: £240,000

Property Type: Detached House

Parking: Driveway

Heating: Gas

## Entrance



## Lounge

4.58m x 3.14m (15'0" x 10'3")



## Dining Room

3.92m x 2.92m (12'10" x 9'6")



## Kitchen

2.83m x 2.70m (9'3" x 8'10")



## 1st Floor Landing



## Bedroom 1

3.58m x 2.76m (11'8" x 9'0")



## Bedroom 2

3.15m x 2.75m (10'4" x 9'0")

## Bedroom 3

3.51m x 3.06m (11'6" x 10'0")

## Bedroom 4

2.73m x 2.42m (8'11" x 7'11")



## Family Bathroom

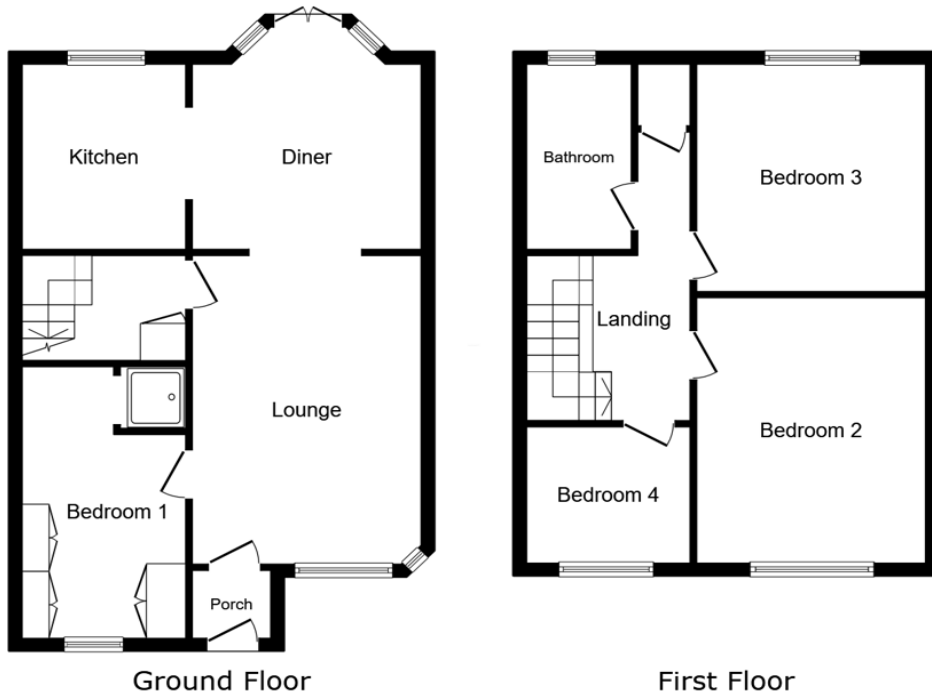


## Down Stairs WC

1.62m x 0.91m (5'3" x 2'11")

## External





This floor plan is for illustrative purposes only. It is not drawn to scale. Any measurements, floor areas (including any total floor area), openings and orientations are approximate. No details are guaranteed, they cannot be relied upon for any purpose and do not form any part of any agreement. No liability is taken for any error, omission or misstatement. A party must rely upon its own inspection(s). Powered by [www.Propertybox.io](http://www.Propertybox.io)

Energy Efficiency Rating		
	Current	Potential
<i>Very energy efficient - lower running costs</i>		
(92-100) <b>A</b>		
(81-91) <b>B</b>		85
(69-80) <b>C</b>	73	
(55-68) <b>D</b>		
(39-54) <b>E</b>		
(21-38) <b>F</b>		
(1-20) <b>G</b>		
<i>Not energy efficient - higher running costs</i>		
<b>England, Scotland &amp; Wales</b>	EU Directive 2002/91/EC	

Hutton Close, Fishburn, Stockton-on-Tees, Durham, TS21 4HE

Contact your local branch today for more information on this property:

**107 London Road, Headington, Oxford, Oxfordshire, OX3 9HZ, [www.chancellors.co.uk](http://www.chancellors.co.uk)**

These particulars, whilst believed to be accurate are set out as a general outline only for guidance and do not constitute any part of an offer or contract. Intending purchasers should not rely on them as statements of representation of fact, but must satisfy themselves by inspection or otherwise as to their accuracy. No person in this firm's employment has the authority to make or give any representation or warranty in respect of the property.

