



## 2 bed semi-detached bungalow to buy in TS20

Roseberry Crescent, Norton,  
Stockton-on-Tees, Durham, TS20 1JP

# £180,000

🏠 x2 🪑 x1 🚗 x2

Tenure

**Freehold**

Driveway & Garage parking

## Property features

- ✓ Popular Norton Location
- ✓ South Facing Rear Garden
- ✓ 2 Double Bedrooms
- ✓ Within Reach to Norton High
- ✓ EPC Rating D

## Key Information

- ✓ Council Tax: Band B
- ✓ EPC Rating: D
- ✓ Heating supply: Gas

## Description

\*\*\*\*\*2 Bedroom Semi-Detached Bungalow\*\*\*\*\*

A beautiful two-bedroom semi-detached bungalow, ideally situated on the ever-popular Roseberry Crescent in Norton, Stockton-on-Tees, offering spacious and versatile accommodation in a highly convenient location.

This attractive home is well presented throughout and features a welcoming lounge, fitted kitchen, separate dining room and a lovely conservatory overlooking the rear garden, creating excellent space for both everyday living and entertaining. There are two well-proportioned bedrooms and a family bathroom.

Externally, the property benefits from a front garden, driveway and garage, providing ample off-street parking and storage. To the rear is a particularly appealing south-facing garden with patio area, ideal for enjoying the sun and outdoor dining.

Located within reach of Norton High Street and its excellent range of shops, cafes, bars and local amenities, this delightful bungalow is sure to appeal to a variety of buyers seeking comfort, convenience and a desirable setting.

Early viewing is highly recommended.

Council Tax Band: B

Tenure: Freehold

Price: £180,000

Property Type: Semi-detached Bungalow

Parking: Driveway & Garage

Heating: Gas

## Entrance



## Hallway

## Lounge

5.01m x 3.59m (16'5" x 11'9")



## Kitchen

3.14m x 2.83m (10'3" x 9'3")



## Dining Room

2.84m x 2.38m (9'3" x 7'9")



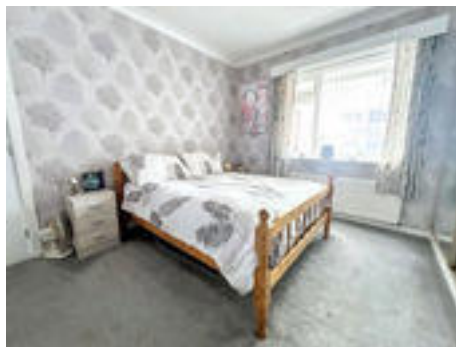
## Conservatory

3.04m x 2.45m (9'11" x 8'0")



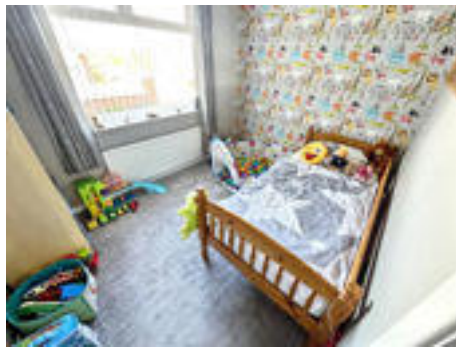
## Bedroom 1

3.78m x 2.92m (12'4" x 9'6")



## Bedroom 2

3.07m x 2.39m (10'0" x 7'10")



## Family Bathroom

2.16m x 1.65m (7'1" x 5'4")



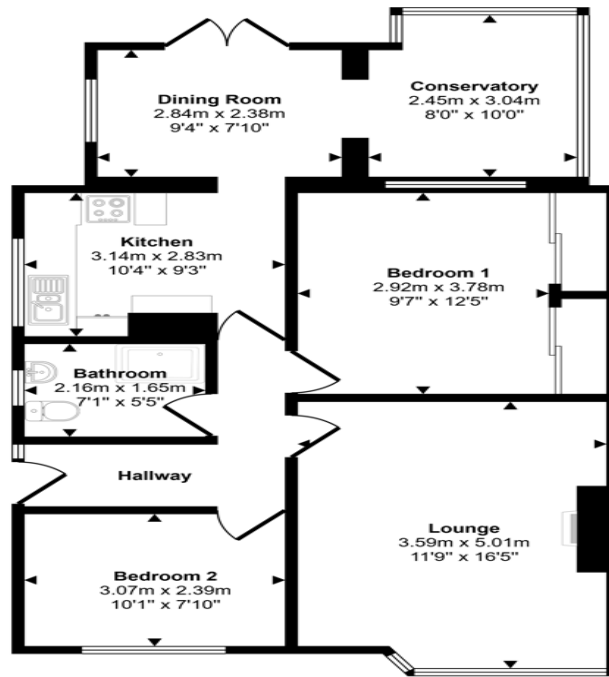
## External



## Floor Plan



Approx Gross Internal Area  
75 sq m / 811 sq ft



Floorplan

This floorplan is only for illustrative purposes and is not to scale. Measurements of rooms, doors, windows, and any items are approximate and no responsibility is taken for any error, omission or mis-statement. Icons of items such as bathroom suites are representations only and may not look like the real items. Made with Made Snappy 360.

Energy Efficiency Rating		Current	Potential
<i>Very energy efficient - lower running costs</i>			
(92-100) <b>A</b>			
(81-91) <b>B</b>			82
(69-80) <b>C</b>			
(55-68) <b>D</b>		67	
(39-54) <b>E</b>			
(21-38) <b>F</b>			
(1-20) <b>G</b>			
<i>Not energy efficient - higher running costs</i>			
<b>England, Scotland &amp; Wales</b>		EU Directive 2002/91/EC	

Roseberry Crescent, Norton, Stockton-on-Tees, Durham, TS20 1JP

Contact your local branch today for more information on this property:

**107 London Road, Headington, Oxford, Oxfordshire, OX3 9HZ, [www.chancellors.co.uk](http://www.chancellors.co.uk)**

These particulars, whilst believed to be accurate are set out as a general outline only for guidance and do not constitute any part of an offer or contract. Intending purchasers should not rely on them as statements of representation of fact, but must satisfy themselves by inspection or otherwise as to their accuracy. No person in this firm's employment has the authority to make or give any representation or warranty in respect of the property.

