



1 bed bungalow to buy in LN6

St. Claires Court, Lincoln, Lincolnshire, LN6 0QT

£55,000 Starting Bid

 x1  x1  x1

Tenure

Freehold

Property features

- ✓ Being Sold via Secure Sale online bidding. Terms and Conditions
- ✓ Over 55's
- ✓ Terraced Bungalow
- ✓ Rear Garden
- ✓ EPC Rating D

Key Information

- ✓ Council Tax: Band A
- ✓ EPC Rating: D
- ✓ Heating supply: Electric
- ✓ Electric supply: National Grid
- ✓ Water supply: Direct mains water
- ✓ Mobile signal: Good

Description

This terraced bungalow is for sale and is located within St. Claires Court, Lincoln, LN6. The property is available with no onward chain and is designed to offer low maintenance living, specifically for those aged over 55. Accommodation comprises one bedroom, one bathroom, a reception room, and a kitchen. The home also benefits from a private garden.

St. Claires Court is situated to the southwest of Lincoln city centre, providing convenient access to a range of local amenities. The nearby Birchwood Shopping Centre offers a selection of shops, cafés, and essential services within easy reach. The area also features several local parks such as Hartsholme Country Park, ideal for leisure and outdoor activities.

For those relying on public transport, the property is served by local bus routes providing access to Lincoln city centre and surrounding areas. Lincoln railway station is approximately 2.5 miles away, offering direct services to destinations including Nottingham (journey time around 55 minutes), Sheffield, and London King's Cross (with changes), making longer journeys and commutes feasible.

The location is well-placed for access to healthcare facilities and various community amenities, contributing to the sought-after reputation of the area for those seeking a peaceful setting with the conveniences of an established neighbourhood. The property offers a functional layout and outdoor space while maintaining easy access to public transport and local attractions, presenting an option for independent, low maintenance living for over 55s.

EPC rating: D. Tenure: Freehold, Service charge description: £192.50 monthly,

For sale through Pattinson Auction under Conditional Terms.

Council Tax Band: A

Tenure: Freehold

Price: Starting Bid £55,000

Property Type: Bungalow

Parking: Communal

Year built: 1980

Construction materials: Brick and block

Roofing type: Clay tiles

Risk of floods and or erosion: No

Flooded in last 5 years: No

Flood defences: No

Planning permissions or proposals for development: No

Coalfield or mining area: No

Listed property: No

Conservation area: No

Public rights of way: No

Adaptions for accessibility: No

Restrictions: No

Required access: No

Heating: Electric

Electric: National Grid

Water: Direct mains water

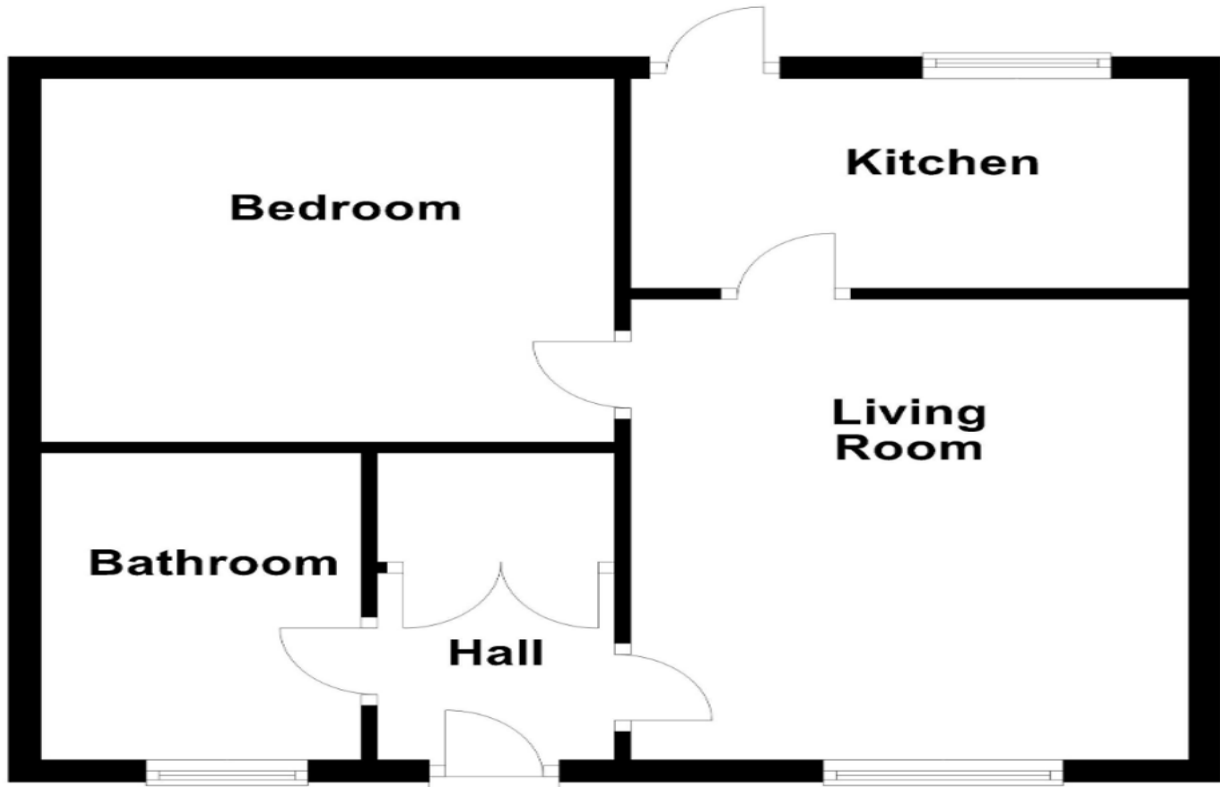
Water meter: Yes

Sewerage: Standard UK domestic

Air conditioning: No

Mobile signal coverage: Good

Ground Floor



Energy Efficiency Rating		Current	Potential
<i>Very energy efficient - lower running costs</i>			
(92-100) A			
(81-91) B			
(69-80) C			79
(55-68) D		63	
(39-54) E			
(21-38) F			
(1-20) G			
<i>Not energy efficient - higher running costs</i>			
England, Scotland & Wales		EU Directive 2002/91/EC	

St. Claires Court, Lincoln, Lincolnshire, LN6 0QT

Contact your local branch today for more information on this property:

107 London Road, Headington, Oxford, Oxfordshire, OX3 9HZ, www.chancellors.co.uk

These particulars, whilst believed to be accurate are set out as a general outline only for guidance and do not constitute any part of an offer or contract. Intending purchasers should not rely on them as statements of representation of fact, but must satisfy themselves by inspection or otherwise as to their accuracy. No person in this firm's employment has the authority to make or give any representation or warranty in respect of the property.

