



To buy

3 bed terraced house to buy in

Keithlands Avenue, Norton, Stockton On Tees, Durham, TS20 2QR

£150,000

🏠 x3 🚗 x1 🚻 x2

Tenure

Freehold

Driveway parking

Property features

- ✓ Three Generous Bedrooms
- ✓ Downstairs W/C
- ✓ Enclosed Rear Garden
- ✓ Driveway For Off-Street Parking
- ✓ EPC Rating D

Key Information

- ✓ Council Tax: Band A
- ✓ EPC Rating: D
- ✓ Heating supply: Gas

Description

Situated on the ever-popular Keithlands Avenue in Norton, Stockton-on-Tees, this well-presented three-bedroom mid-terrace home offers spacious and versatile accommodation, making it an ideal purchase for families, first-time buyers, or those looking to upsize.

The ground floor briefly comprises an inviting entrance hallway, a comfortable lounge, separate dining area, fitted kitchen, bright conservatory, and the added benefit of a downstairs W/C. To the first floor are three good-sized bedrooms and a family bathroom.

A particular feature of the property is the useful loft space, which includes a Velux window and pull-down ladder access, providing excellent additional storage.

Externally, the home enjoys a beautiful and generously sized rear garden, perfect for relaxing or entertaining, along with a low-maintenance garden and driveway to the front.

Keithlands Avenue is ideally positioned within the sought-after Norton area, well known for its strong sense of community, highly regarded schools, and excellent local amenities. Norton High Street offers a charming range of shops, cafés, bars, and restaurants, while nearby road links provide convenient access to Stockton, Middlesbrough, and the A19, making it an excellent choice for commuters.

Please call today for more information or to arrange an internal inspection.

Council Tax Band: A

Tenure: Freehold

Price: £150,000

Property Type: Terraced House

Parking: Driveway

Heating: Gas

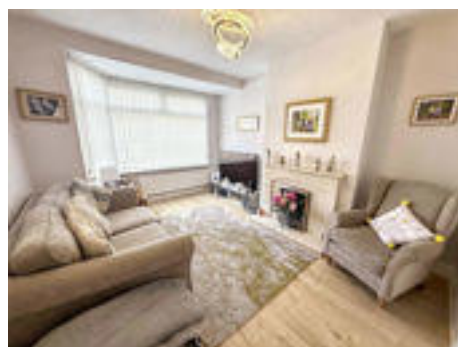
Entrance



Hallway

Lounge

3.30m x 4.08m (10'9" x 13'4")



Dining Room

4.28m x 2.78m (14'0" x 9'1")



Kitchen

2.28m x 2.97m (7'5" x 9'8")



Conservatory

2.09m x 2.46m (6'10" x 8'0")



W/C

Stairs to First Floor

Bedroom One

3.26m x 3.37m (10'8" x 11'0")



Bedroom Two

3.32m x 2.86m (10'10" x 9'4")



Bedroom Three

2.83m x 2.27m (9'3" x 7'5")



Bathroom W/C

1.68m x 1.64m (5'6" x 5'4")

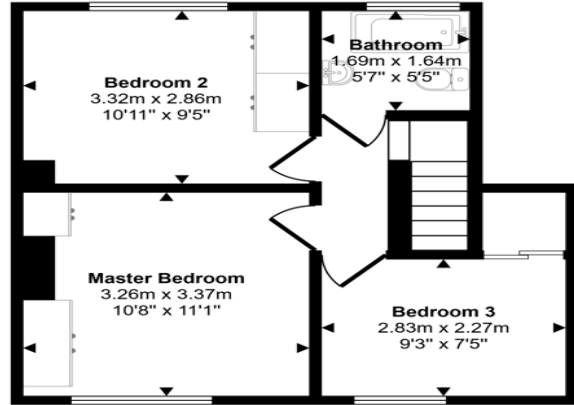
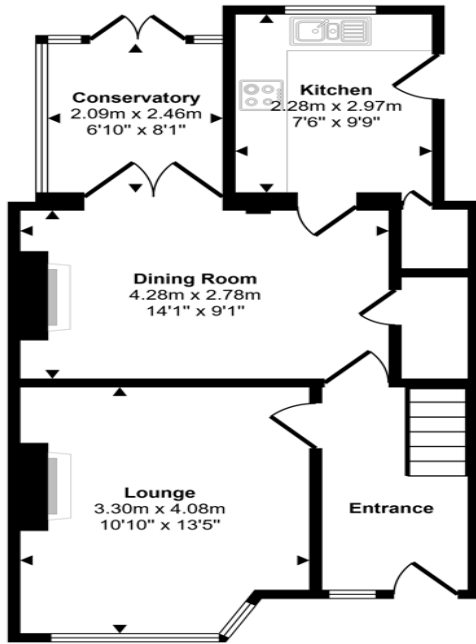


Loft Space

External



Approx Gross Internal Area
85 sq m / 911 sq ft



This floorplan is only for illustrative purposes and is not to scale. Measurements of rooms, doors, windows, and any items are approximate and no responsibility is taken for any error, omission or mis-statement. Icons of items such as bathroom suites are representations only and may not look like the real items. Made with Made Snappy 360.

Energy Efficiency Rating		Current	Potential
Very energy efficient - lower running costs			
(92-100) A			
(81-91) B			
(69-80) C			
(55-68) D		66	73
(39-54) E			
(21-38) F			
(1-20) G			
Not energy efficient - higher running costs			
England, Scotland & Wales		EU Directive 2002/91/EC	

Keithlands Avenue, Norton, Stockton On Tees, Durham, TS20 2QR

Contact your local branch today for more information on this property:

107 London Road, Headington, Oxford, Oxfordshire, OX3 9HZ, www.chancellors.co.uk

These particulars, whilst believed to be accurate are set out as a general outline only for guidance and do not constitute any part of an offer or contract. Intending purchasers should not rely on them as statements of representation of fact, but must satisfy themselves by inspection or otherwise as to their accuracy. No person in this firm's employment has the authority to make or give any representation or warranty in respect of the property.

