



3 bed terraced house to buy in

Morris Crescent, Stockton ,
Stockton-on-Tees, Durham, TS19 8ZG

£138,000

🏠 x3 🚿 x1 🚿 x1

Tenure

Freehold

Allocated parking

Property features

- ✓ POPULAR LOCATION
- ✓ MODERN KITCHEN
- ✓ SPACIOUS LOUNGE
- ✓ MODERN BATHROOM
- ✓ EPC Rating C

Key Information

- ✓ Council Tax: Band B
- ✓ EPC Rating: C
- ✓ Heating supply: Gas
- ✓ Electric supply: National Grid
- ✓ Water supply: Direct mains water
- ✓ Mobile signal: Good

Description

Positioned within a highly convenient location, this beautifully presented home offers effortless access to the University Hospital of North Tees, alongside a range of local schools, shops and everyday amenities—making it an ideal choice for both first-time buyers and growing families alike.

From the moment you step inside, the property delivers a sense of modern comfort and thoughtful design. The welcoming entrance hall sets the tone, complete with a cloakroom/W.C and staircase rising to the first floor. The kitchen is both stylish and practical, fitted with a comprehensive range of wall, base and drawer units, complemented by work surfaces incorporating a sink and drainer. Integrated appliances include a hob with oven below and extractor above, along with a fridge, freezer, washing machine and slimline dishwasher—perfect for contemporary living.

To the rear, the home truly comes into its own with a generously proportioned living room, bathed in natural light and enhanced by French doors that open directly onto the garden—creating a seamless indoor-outdoor flow, ideal for relaxing or entertaining. A useful under-stairs cupboard provides additional storage.

Ascending to the first floor, the landing offers loft access and leads to three well-appointed bedrooms and the family bathroom. The principal bedroom spans the full width of the property to the front, benefitting from dual windows and a built-in storage cupboard. Bedrooms two and three are positioned to the rear, offering flexibility for family life, guests or home working. The family bathroom is finished with a modern white suite, featuring a bath with shower over and glass screen.

Externally, the property continues to impress with a pleasant rear garden, designed for ease of maintenance, with a patio area leading onto a lawn, perfect for outdoor enjoyment. A rear gate provides access to two allocated parking spaces.

A superb opportunity to acquire a turn-key home in a well-connected setting—contact our Stockton team today to arrange your viewing.

Council Tax Band: B

Tenure: Freehold

Price: £138,000

Property Type: Terraced House

Parking: Allocated

Heating: Gas

Electric: National Grid

Water: Direct mains water

Sewerage: Standard UK domestic

Air conditioning: No

Mobile signal coverage: Good

Accommodation

Living Room

4.46m x 3.45m (14'7" x 11'3")



Kitchen

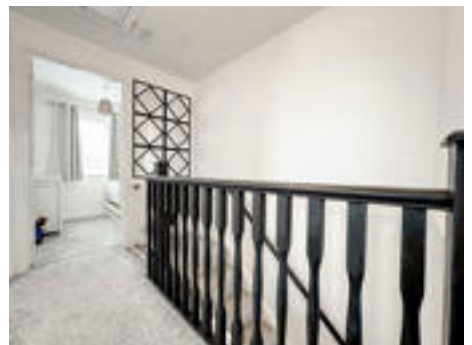
4.13m x 3.51m (13'6" x 11'6")



Cloak room



Landing



Bedroom 1

4.47m x 2.93m (14'7" x 9'7")



Bedroom 2

2.91m x 2.42m (9'6" x 7'11")



Bedroom 3

1.97m x 1.95m (6'5" x 6'4")



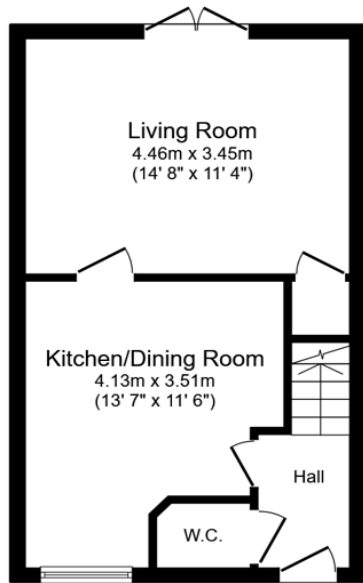
Bathroom

2.54m x 1.77m (8'4" x 5'9")

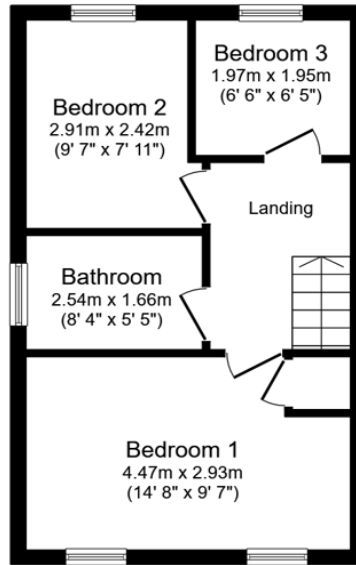


Rear garden





Ground Floor
Floor area 34.2 sq.m. (368 sq.ft.)



First Floor
Floor area 34.3 sq.m. (369 sq.ft.)

Total floor area: 68.5 sq.m. (737 sq.ft.)

This floor plan is for illustrative purposes only. It is not drawn to scale. Any measurements, floor areas (including any total floor area), openings and orientations are approximate. No details are guaranteed, they cannot be relied upon for any purpose and do not form any part of any agreement. No liability is taken for any error, omission or misstatement. A party must rely upon its own inspection(s). Powered by www.Propertybox.io

| Energy Efficiency Rating | | Current | Potential |
|--|--|----------------------------|-----------|
| <i>Very energy efficient - lower running costs</i> | | | |
| (92-100) A | | | |
| (81-91) B | | | 91 |
| (69-80) C | | 78 | |
| (55-68) D | | | |
| (39-54) E | | | |
| (21-38) F | | | |
| (1-20) G | | | |
| <i>Not energy efficient - higher running costs</i> | | | |
| England, Scotland & Wales | | EU Directive 2002/91/EC | |

Morris Crescent, Stockton, Stockton-on-Tees, Durham, TS19 8ZG

Contact your local branch today for more information on this property:

107 London Road, Headington, Oxford, Oxfordshire, OX3 9HZ, www.chancellors.co.uk

These particulars, whilst believed to be accurate are set out as a general outline only for guidance and do not constitute any part of an offer or contract. Intending purchasers should not rely on them as statements of representation of fact, but must satisfy themselves by inspection or otherwise as to their accuracy. No person in this firm's employment has the authority to make or give any representation or warranty in respect of the property.

