



4 bed detached house to buy in

Stargate Close, Langley Park, Durham,
Durham, DH7 9FW

£270,000

🏠 x4 🚗 x3 🚻 x1

Tenure

Freehold

Double Garage parking

Property features

- ✓ Four Bedroom Detached
- ✓ Master with En-Suite
- ✓ Double Garage
- ✓ Downstairs W.C
- ✓ EPC Rating C

Key Information

- ✓ Council Tax: Band D
- ✓ EPC Rating: C
- ✓ Heating supply: Gas

Description

We are delighted to present to the market this stunning four bedroom detached home located in the highly sought-after area of Langley Park, Durham.

This impressive property effortlessly blends modern comfort with tasteful decor, ensuring it is ready for immediate move-in. The house boasts four generously sized bedrooms, one featuring an ultra-modern en-suite, perfect for creating a tranquil space away from the main household.

The property reveals one spacious reception area, paving the way for a delightful space to accommodate your family and guests, whether for entertaining or relaxing. Additionally, the home features three beautifully designed bathrooms incorporating modern fixtures and fittings and creating practical spaces to cater to your daily routines.

A key highlight of this residence is the double garage, providing ample space. This feature may cater to your automotive needs or serve as additional storage, distinguishing this property from others.

Located in a serene, residential settlement area. This house proposes an ideal opportunity for a family looking for a peaceful neighbourhood within the proximity of Durham's vibrant city centre.

Offered for residential sale, this wonderful home displays an opportunity not to miss. Register your interest today and be captivated by the elegance and style this Durham Home has to offer.

Keep in mind, Pattinson Estate Agents, your trusted partner, is always on hand to assist you with any queries you might have about this lovely home. So why wait? Make this beautiful house your home!

Council Tax Band: D

Tenure: Freehold

Price: Offers In The Region Of £270,000

Property Type: Detached House

Parking: Double Garage, Driveway

Heating: Gas

Front Exterior

Driveway to property with a double garage.



Living Room

5.00m x 4.20m (16'4" x 13'9")

Spacious family living room.

Dining Room

4.60m x 2.70m (15'1" x 8'10")

Dining room leads to kitchen and also french doors into the conservatory.

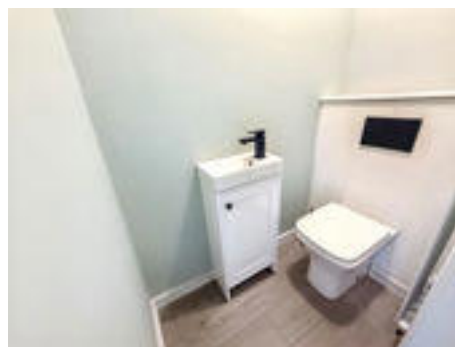


Kitchen

3.50m x 2.80m (11'5" x 9'2")

Kitchen has plenty of base and wall units for storage.

W.C



Bedroom 1

3.10m x 3.00m (10'2" x 9'10")

Light and spacious double bedroom.



En-Suite



Bedroom 2

4.10m x 2.50m (13'5" x 8'2")

Second double bedroom.



Bedroom 3

3.00m x 3.00m (9'10" x 9'10")

Third bedroom can also fit a double bed.



Bedroom 4

2.50m x 2.50m (8'2" x 8'2")

Fourth bedroom is used as a dressing room.



Bathroom



Conservatory

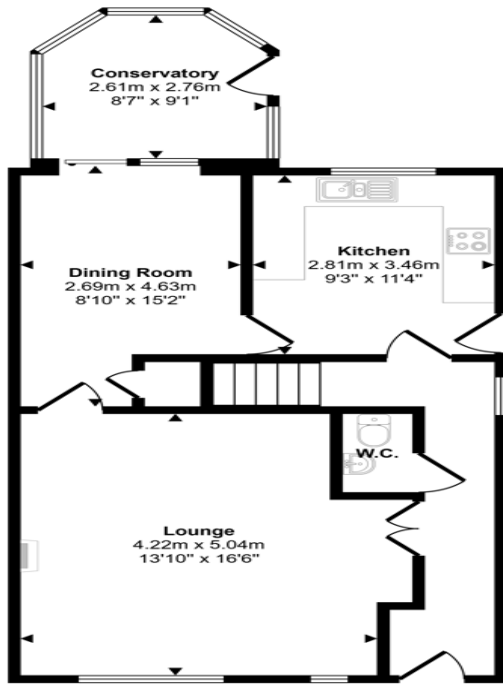
2.80m x 2.60m (9'2" x 8'6")



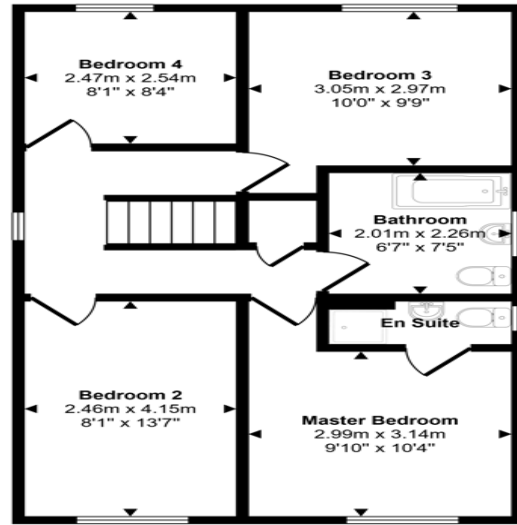
Rear Garden



Approx Gross Internal Area
116 sq m / 1250 sq ft



Ground Floor
Approx 62 sq m / 662 sq ft



First Floor
Approx 55 sq m / 589 sq ft

This floorplan is only for illustrative purposes and is not to scale. Measurements of rooms, doors, windows, and any items are approximate and no responsibility is taken for any error, omission or mis-statement. Icons of items such as bathroom suites are representations only and may not look like the real items. Made with Made Snappy 360.

Energy Efficiency Rating		
	Current	Potential
<i>Very energy efficient - lower running costs</i>		
(92-100) A		
(81-91) B		84
(69-80) C	71	
(55-68) D		
(39-54) E		
(21-38) F		
(1-20) G		
<i>Not energy efficient - higher running costs</i>		
England, Scotland & Wales	EU Directive 2002/91/EC	

Stargate Close, Langley Park, Durham, Durham, DH7 9FW

Contact your local branch today for more information on this property:

107 London Road, Headington, Oxford, Oxfordshire, OX3 9HZ, www.chancellors.co.uk

These particulars, whilst believed to be accurate are set out as a general outline only for guidance and do not constitute any part of an offer or contract. Intending purchasers should not rely on them as statements of representation of fact, but must satisfy themselves by inspection or otherwise as to their accuracy. No person in this firm's employment has the authority to make or give any representation or warranty in respect of the property.

